

## CAFE + MUSEUM SHOP

Exhibition catalogs and related publications, postcards, Shizuoka City Museum of Art original goods and other items are available for purchase here. At the café next door, visitors may enjoy fragrant coffee, Shizuoka black tea and other items.



### Original Goods

Mugs / masking tape / badges / coloured pencils / green tea candies

※Please note that these items may become out of stock.

The museum management requests your cooperation with regard to the following items.



Do not touch any of the works on display.



No photography is allowed in the galleries.



In the interests of artwork protection, when in the galleries, please refrain from using any writing implements other than pencils.



Please set mobile phones to silent mode and refrain from use when in the galleries.



No eating or drinking is allowed outside of the café.



Guests may not enter the museum with pets or plants.

Requests to Visitors to Prevent the Spread of the Coronavirus Infection



Please refrain from visiting the museum if you are unwell, such as with symptoms of fever or cough.



Please wear a face mask. ※Children under the age of two are not required to wear a face mask.



Please be aware that your temperature will be taken at the entrance of the museum.



Please keep your distance from other visitors.



Please wash your hands and disinfect your hands and fingers.



Please refrain from talking in the exhibition rooms.

※In order to reduce congestion, we have a visitor reservation system on our website.

### Services

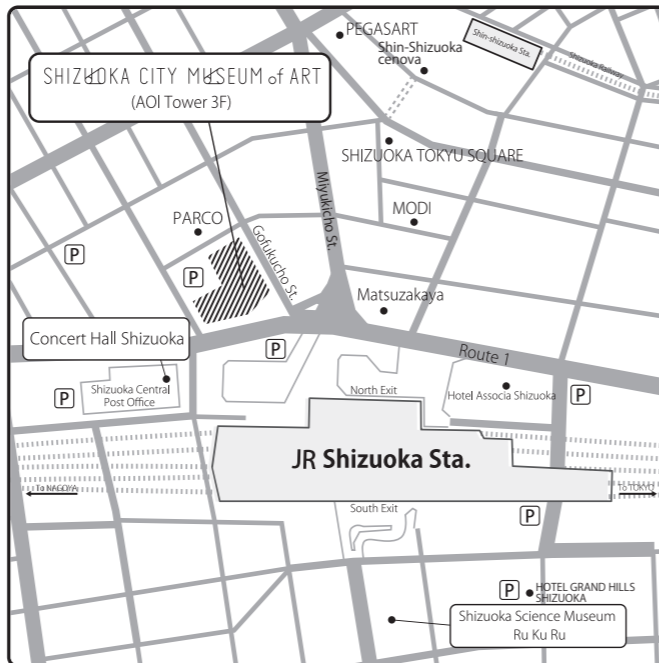


**Coin-operated lockers and umbrella stands:** Require a one-hundred-yen coin, which is returned after use.



**Wheelchairs and baby strollers:** Available free of charge at the front desk.

## Access



### By local train

Three-minute walk from the north exit of JR Shizuoka Station, via underground walkway. Five-minute walk from Shin-Shizuoka Station (Shizuoka Railway).

### By Shinkansen train

From Tokyo Station or Nagoya Station, about one hour on the Tokaido Shinkansen Hikari. From Shin-Osaka Station, about two hours on the Tokaido Shinkansen Hikari.

### By car

About fifteen minutes from Shizuoka Interchange on the Tomei Expressway. (Parking facilities are available nearby for those arriving by car.)

### By air

About one hour from Mt. Fuji Shizuoka Airport on the Shizutetsu Justline bus (Shizuoka Airport Liner).

**Hours:** 10:00 – 19:00 (Entry to galleries until thirty minutes before closing)

Closed on Mondays and during year-end/new-year's holidays (when a national holiday falls on a Monday, closed the following day).

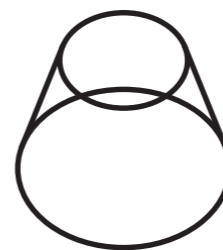
**Entrance fee:** Dependent on the exhibition.

※ Children under middle-school age, and people with disabled person identification booklets (with one assistant, when needed), may enter free of charge.

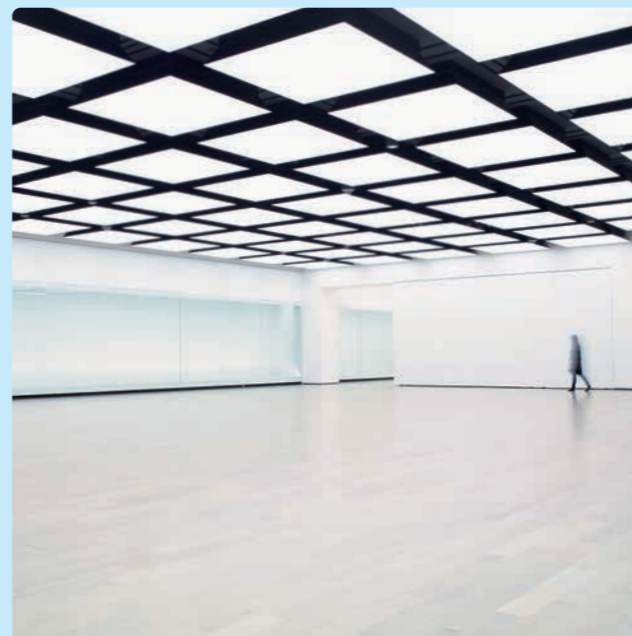
### Address:

Aoi Tower 3F, 17-1, Koyamachi, Aoi-ku, Shizuoka, 420-0852 JAPAN  
tel. 054-273-1515 fax. 054-273-1518 www.shizubi.jp

## Schedule 2021 – 2022



静岡市美術館  
SHIZUOKA CITY  
MUSEUM of ART

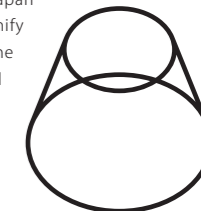


Shizuoka City Museum of Art opened its doors in May 2010, and is located on the third floor of the Aoi Tower building, at the north exit of JR Shizuoka Station. The museum's guiding principle is "To create and communicate an energetic art and culture of the people and the local region". While maintaining a focus on organizing exhibitions and communication programs, we aim to be an art museum that may serve as a "meeting place in the heart of town".



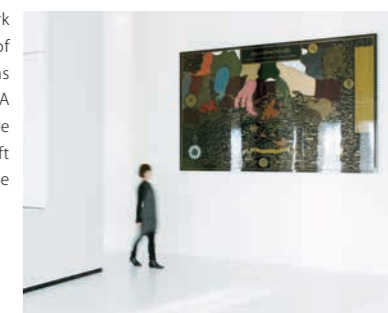
### Museum Logo

The museum logo features a motif of Mount Fuji, which is a symbol of Shizuoka as well as of Japan as a whole. The two overlapping circles signify widening rings of people gathered around the museum, and represent linking the local region with the world. Furthermore, this logo suggests an "enjoyment of seeing" that may alter our way of seeing through changes in perspective and depth.



### A View of the Fifty-Three Stations of the Tokaido

In January 2012, a lacquer work representing a bird's-eye view of the entire Tokaido Road was unveiled in the entrance hall. A large piece, measuring two-by-three meters, it transmits the craft traditions of Shizuoka into the present.



## The Royal Botanic Gardens, Kew Botanical Arts of Flowers Queen Charlotte and the Enlightenment

April 15 (Thu.) - June 6 (Sun.), 2021

The Royal Botanic Gardens, Kew, is a designated UNESCO World Heritage Site. It has been a world leader in botanical research since its opening in the mid-18th Century, and is known not only for its collection of botanical specimens, but also for over 200,000 pieces of botanical art (botanical illustrations). This exhibition examines the history of Kew through approximately 130 exhibits, including botanical art drawn in the 18th-19th Centuries, and Wedgwood ware, which was permitted to be called "Queen's Ware" by Queen Charlotte, who contributed to the development of Kew. This is an occasion to discover the world of botanical art, which combines precise description based on observation with beauty.

Mrs Thomas Hervey, *Roses. Rosa centifolia and Rosa gallica*, 1800, The Royal Botanic Gardens, Kew.  
© The Board of Trustees of the Royal Botanic Gardens, Kew



## En route to Impressionism French Paintings from the Reims Museum of Fine Arts

November 20 (Sat.), 2021 - January 23 (Sun.), 2022

The 19th Century saw a great development of landscape painting in France. The landscape came to be seen as the subject of the painting itself, not as a mythological or historical backdrop. In addition, the invention of tubes of paint and the progress of the railway network led artists to work outdoors. This exhibition traces the history of modern French landscape painting, principally through the collection of the Reims Museum of Fine Arts, which holds a large number of 19th Century French paintings, particularly those by Camille Corot. The exhibition also features a selection of over 70 works including masterpieces by Corot, works by painters of the Barbizon school, Eugène Boudin, and the Impressionists Claude Monet and Camille Pissarro.



Claude Monet, *Les Rochers de Belle-Ile (Rocks at Belle-Ile)*, 1886, Reims Museum of Fine Arts.  
© MBA Reims 2019/Photo : C.Devleeschauwer

## Yoshida Hiroshi: Commemorating the 70th Anniversary of His Death

June 19 (Sat.) - August 29 (Sun.), 2021

YOSHIDA Hiroshi (1876-1950) was a pioneering Western-style painter of landscapes, active from the Meiji through to Showa periods. During the latter half of his life, he devoted himself to the creation of new woodblock prints, integrating the realistic depictions of Western painting with traditional Japanese woodblock printing techniques. YOSHIDA's prints were made with delicate gradations achieved through, on average, more than 30 layers in the printing process. The freshness of his style capturing nature charmed audiences across the world. The fact that some of his print works were displayed in the office of Diana, the late Princess of Wales, has recently attracted much attention. This exhibition features around 200 woodblock prints, alongside watercolours, oil paintings, sketchbooks, and never before exhibited printing blocks.



Yoshida Hiroshi, *Sunrise*, 1926

## Byodoin Temple 970th Anniversary: Treasures of Phoenix Hall and Jodoin Temple Aspiration and Prayer for the Pure Land (tentative title)

February 5 (Sat.) - March 27 (Sun.), 2022

The Byodoin is a Buddhist sanctuary temple located on the banks of the Ujigawa River, which flows through the southern part of Kyoto. This famous temple was built in 1052 by FUJIWARA no Yorimichi, the chief advisor to the Emperor, who converted the villa, inherited from his father Michinaga, into a Buddhist temple. The Amida Hall, located at the heart of the temple complex, is popularly known as "Phoenix Hall (Hou-ou-do)". The splendid sublimity of the interior of the hall, representing the Pure Land with the *Seated statue of Amida Nyorai*, shows the sophisticated aesthetic sense of the nobility in the Heian period.

This exhibition explores the faith and beauty of Byodoin, spanning its history of 970 years. Beginning with the National Treasure *Worshipping Buddhist Saints holding a mass in the clouds* enshrined in Phoenix Hall, the exhibition presents the treasures that were introduced to Jodoin (a sub-temple of Byodoin), such as wall paintings from the Yorin-an Shoin Study (Important Cultural Property), and Heian sculptures which will be on display for the first time.



*Worshipping Buddhist Saints holding a mass in the clouds. south 1, 1053, National Treasure*  
※Exhibits are subject to change without advance notice.

©Byodoin

## Celebrating the 160th Anniversary of Her Birth GRANDMA MOSES: A Retrospective Exhibition

September 14 (Tue.) - November 7 (Sun.), 2021

Anna Mary Robertson Moses (1860-1961), known by her nickname Grandma Moses, began painting in earnest in her 70s and produced over 1,600 works until her final year at the age of 101. Her paintings depict the natural beauty and rural life in a farm village of New England in the United States with a naive approach. They caught the eye of a collector who happened to be visiting the village, and after her first solo exhibition at the age of 80, she immediately became a popular artist known throughout the United States.

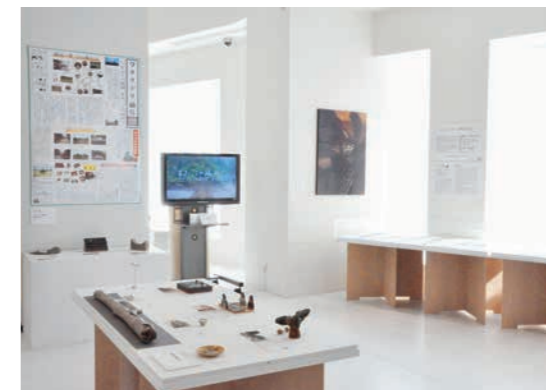
This exhibition presents some 130 works, including oil paintings, her belongings and related material, some of which are on show for the first time in Japan, and explores the fascinating life and work of Grandma Moses, who kept painting the "beautiful world" and life's simple pleasures.



Anna Mary Robertson "Grandma" Moses, *Apple Butter Making*, 1947, Private collection; Courtesy Galerie St. Etienne, New York.  
© 2021, Grandma Moses Properties Co., NY

## Communication Programs

The entrance hall, where the Museum Shop and Café are located, the multi-purpose room and the workshop room are collectively called the "Communication Zone". Various outreach programs are held here, including presentations and lectures on diverse art scenes, symposiums, concerts, screenings of art films, and workshops. Also, "Museum Classes" – art appreciation sessions for school groups – are coordinated for each exhibition. Please inquire for more information.



Megururi Art Shizuoka 2020  
Wataridori Keikaku (ASO Tomoko and TAKEUCHI Akiko)



(Above) Workshop room (view from the Open Studio day)  
(Below) Multi-purpose room (view from a lecture event)