

CAFE + MUSEUM SHOP

Exhibition catalogs and related publications, postcards, Shizuoka City Museum of Art original goods and other items are available for purchase here. At the café next door, visitors may enjoy fragrant coffee, Shizuoka black tea and other items.



Original Goods

plastic folders / coloured pencils /
masking tape / badges / green tea candies
※Please note that these items may become out
of stock.

The museum management requests your cooperation with regard to the following items.



Do not touch any of the works on display.



No photography is allowed in the galleries.



In the interests of artwork protection, when in the galleries, please refrain from using any writing implements other than pencils.



Please set mobile phones to silent mode and refrain from use when in the galleries.



No eating or drinking is allowed outside of the café.



Guests may not enter the museum with pets or plants.

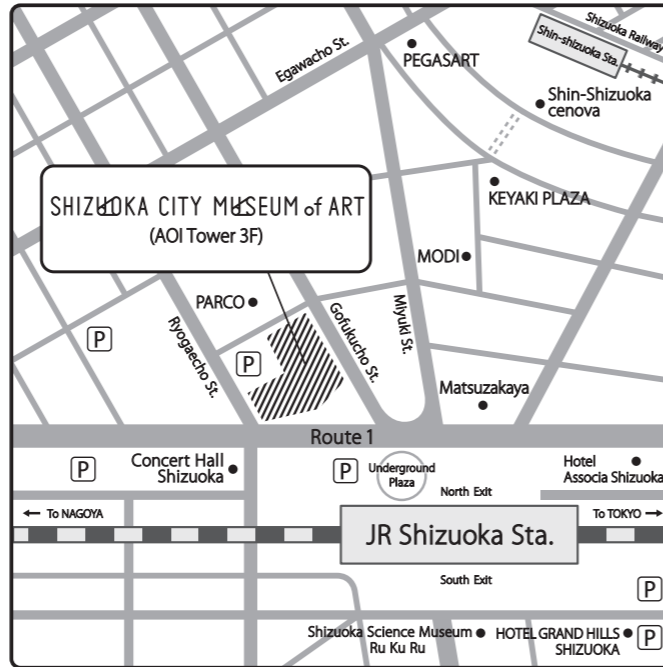
Services



Coin-operated lockers and umbrella stands:
Require a one-hundred-yen coin, which is returned after use.



Wheelchairs and baby strollers:
Available free of charge at the front desk.



By local train

Three-minute walk from the north exit of JR Shizuoka Station, via underground walkway. Five-minute walk from Shin-Shizuoka Station (Shizuoka Railway).

By Shinkansen train

From Tokyo Station or Nagoya Station, about one hour on the Tokaido Shinkansen Hikari. From Shin-Osaka Station, about two hours on the Tokaido Shinkansen Hikari.

By car

About fifteen minutes from Shizuoka Interchange on the Tomei Expressway. (Parking facilities are available nearby for those arriving by car.)

By air

About one hour from Mt. Fuji Shizuoka Airport on the Shizutetsu Justline bus (Shizuoka Airport Liner).

Hours: 10:00–19:00 (Entry to galleries until thirty minutes before closing)

Closed on Mondays and during year-end / new-year's holidays (when a national holiday falls on a Monday, closed the following day).

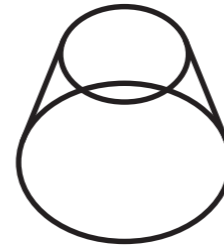
Entrance fee: Dependent on the exhibition.

※ Children under middle-school age, and people with disabled person identification booklets (with one assistant, when needed), may enter free of charge.

ADDRESS:

Aoi Tower 3F, 17-1, Koyamachi, Aoi-ku, Shizuoka, 420-0852 JAPAN
tel. 054-273-1515 fax. 054-273-1518 www.shizubi.jp

SCHEDULE 2026–2027



静岡市美術館
SHIZUOKA CITY
MUSEUM of ART

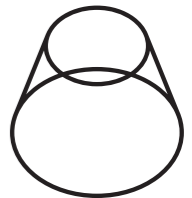


Shizuoka City Museum of Art opened its doors in May 2010, and is located on the third floor of the Aoi Tower building, at the north exit of JR Shizuoka Station. The museum's guiding principle is "To create and communicate an energetic art and culture of the people and the local region". While maintaining a focus on organizing exhibitions and communication programs, we aim to be an art museum that may serve as a "meeting place in the heart of town"



Museum Logo

The museum logo features a motif of Mount Fuji, symbolising Shizuoka and Japan. The 2 overlapping circles signify the growing network of people around the museum, and the connection of the local region with the world. Through the varying depths based on perspectives, the logo also reminds us of the fascination of looking.



A View of the Fifty-Three Stations of the Tokaido

In January 2012, a lacquer work representing a bird's-eye view of the entire Tokaido Road was unveiled in the entrance hall. A large piece, measuring two-by-three meters, it transmits the craft traditions of Shizuoka into the present.



Hyakkiyako Exhibition of Mizuki Shigeru

April 4 (Sat.) – June 14 (Sun.), 2026

MIZUKI Shigeru (1922–2015) is one of Japan's most acclaimed *manga* artists. Fascinated by *yōkai* (traditional Japanese monsters, ghouls, and goblins) from childhood and immersed in their research, MIZUKI popularised *yōkai* culture within modern Japan through his *manga*, spearheading the *yōkai* boom. This exhibition focuses on the creative process and specific techniques behind MIZUKI Shigeru's *yōkai* illustrations. As well as displaying *yōkai*-related materials, books, and original *manga* manuscripts, it presents several original *yōkai* artworks. The show delves into MIZUKI's work, which both inherited the *yōkai* culture built by predecessors and developed it into something even richer. Please fully enjoy MIZUKI's unique worldview, depicted with meticulous yet comical style.

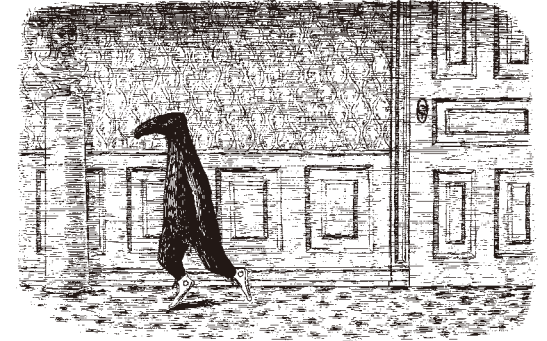


GASHADOKURO ©MIZUKI Productions

Edward Gorey's Mysterious Messages

November 28 (Sat.), 2026 – January 11 (Mon.), 2027

Edward GOREY (1925–2000) is a picture book author and an artist whose enigmatic worldview and intricate monochrome line drawings have garnered fervent fans worldwide. His picture books such as *The Doubtful Guest* and *The Hapless Child* have in turn been introduced to Japan too. Beyond his own books, for which he created both texts and illustrations, GOREY showcased his multifaceted talents through cover art and illustrations for books by other writers, designs for stage sets, and posters for theatre and ballet. With over 200 works, including original illustrations from his own books and unpublished picture books, alongside posters and publications, this exhibition tries to decipher the secret message hidden within his creative world.



Edward Gorey, *The Doubtful Guest*, original illustration, 1954
©2026 The Edward Gorey Charitable Trust

At Home with Gustavsberg

June 27 (Sat.) – September 6 (Sun.), 2026

Gustavsberg, established in 1825 in south-eastern Sweden, remains one of the leading Scandinavian porcelain manufacturers and is still producing in the same location. Its tableware, born from a rich relationship between the industry and designers' free creativity, has accompanied and added colour to people's daily lives. This exhibition centres on works by four iconic designers from the Gustavsberg factory: Wilhelm KÅGE, Stig LINDBERG, Lisa LARSON, and Karin BJÖRQUIST. Through approximately 300 works from the collection of the Nationalmuseum, Sweden's museum of art and design, the show explores the enduring history and charm of Gustavsberg, whose creations continue to be loved to this day.

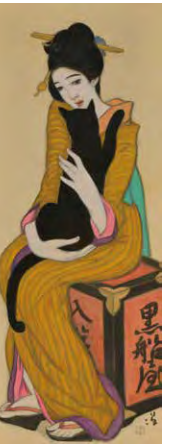
Lisa LARSON, *Lion Giant* from "Afrika" series, designed: 1964 / production: 1964-88
Stig LINDBERG, "Berså" series, production: 1960-74
Nationalmuseum, Stockholm
© Nationalmuseum / Gustavsbergs Porslän AB
Photo: Viktor Fordell / Nationalmuseum



Takehisa Yumeji — An Artist Who Defined His Era

January 23 (Sat.) – March 28 (Sun.), 2027

TAKEHISA Yumeji (1884–1934) demonstrated his talents across multiple fields including painting, book design, commercial design, and writing, flourishing from the late Meiji to the early Shōwa era. Yumeji's works, depicting the lingering scenes from the Edo period, a yearning for foreign lands, and the modern culture of the city, were widely disseminated to the public through exhibitions and printed media. His distinctive portrayals of women, known as the "Yumeji style," and his various designs remain immensely popular to this day. This exhibition brings together works of Yumeji in Japan to re-examine Yumeji as an artist who responded to his era. As well as publicly displaying *Kurofuneya*, one of his most iconic works, outside of his Memorial Museum for the first time in approximately 40 years, the show features his traditional Japanese paintings, oil paintings, designs for books and small objects, scrapbooks, and more.

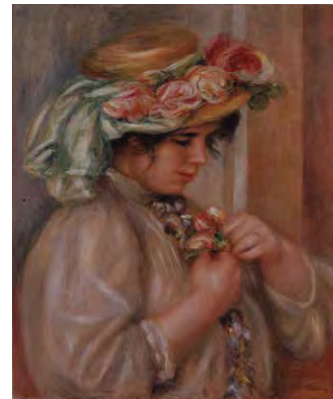


TAKEHISA Yumeji, *Kurofuneya*, 1919,
Takehisa Yumeji Ikaho Memorial Museum

Renoir and Japan

September 22 (Tue.) – November 15 (Sun.), 2026

Pierre-Auguste RENOIR (1841–1919) is a leading painter of Impressionism developed in France. Known for works imbued with a bright, joyful atmosphere, he is one of the most popular painters in Japan. One possible reason RENOIR has been so cherished in Japan is that his works can actually be viewed at art museums in Japan. This exhibition presents works by RENOIR from the collections of Japanese museums, alongside pieces by Japanese painters who were known to revere him, such as UMEHARA Ryūzaburō and YAMASHITA Shintarō. It traces the trajectory of how RENOIR, an artist from a distant foreign land, was embraced in Japan and became a familiar figure to people in Japan.



Pierre-Auguste RENOIR, *Girl with Flowers on Her Chest*, c.1900,
Kumamoto Prefectural Museum of Art

Communication Programmes

The entrance hall, where the Museum Shop and Café are located, the multi-purpose room and the workshop room are collectively called the "Communication Zone". Various outreach programmes are held here, including presentations and lectures on diverse art scenes, symposiums, concerts, screenings of art films, and workshops. Also, "Museum Classes" – art appreciation sessions for school groups – are coordinated for each exhibition.

