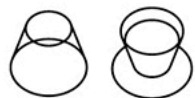
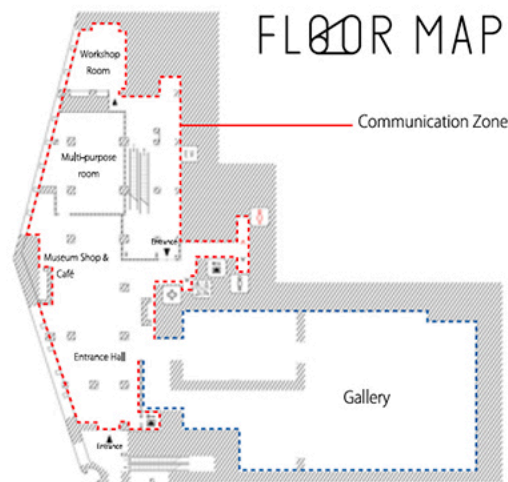


CAFE + MUSEUM SHOP

Exhibition catalogs and related publications, postcards, Shizuoka City Museum of Art original goods and other items are available for purchase here. At the café next door, visitors may enjoy fragrant coffee, Shizuoka's famous green tea and other items.

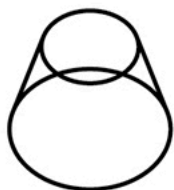


FLOOR MAP

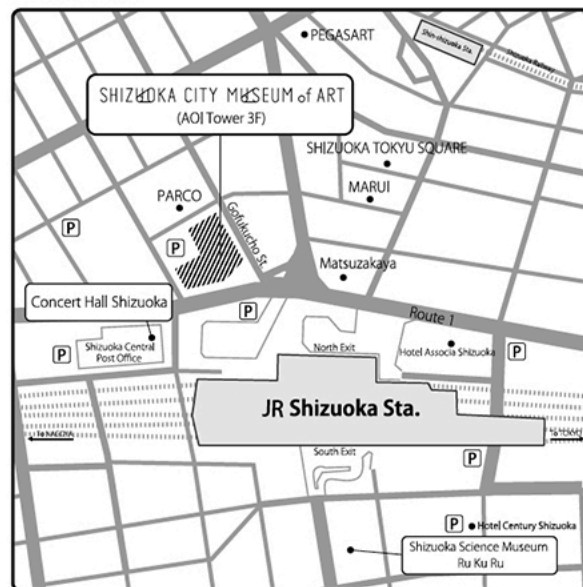


Museum Logo

The museum logo features a motif of Mount Fuji, which is a symbol of Shizuoka as well as of Japan as a whole. The two overlapping circles signify widening rings of people gathered around the museum, and represent linking the local region with the world. Furthermore, this logo suggests an "enjoyment of seeing" that may alter our way of seeing through changes in perspective and depth.



Access



By local train

Three-minute walk from the north exit of JR Shizuoka Station, via underground walkway. Five-minute walk from Shin-Shizuoka Station (Shizuoka Railway).

By Shinkansen train

From Tokyo Station or Nagoya Station, about one hour on the Tokaido Shinkansen Hikari. From Shin-Osaka Station, about two hours on the Tokaido Shinkansen Hikari.

By car

About fifteen minutes from Shizuoka Interchange on the Tomei Expressway. (Parking facilities are available nearby for those arriving by car.)

By air

About one hour from Mt. Fuji Shizuoka Airport on the Shizutetsu Justline bus (Shizuoka Airport Liner).

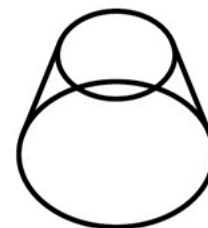
Hours: 10:00 - 19:00 (Entry to galleries until thirty minutes before closing)
Closed on Mondays and during year-end/new-year's holidays (when a national holiday falls on a Monday, closed the following day).
Entrance fee: Dependent on the exhibition.
※Children under middle-school age, and people with disabled person identification booklets (with one assistant, when needed), may enter free of charge.

Address:

Aoi Tower 3F, 17-1, Koyamachi, Aoi-ku, Shizuoka, 420-0852 JAPAN
tel. 054-273-1515 fax. 054-273-1518 www.shizubi.jp

Schedule

2019-2020



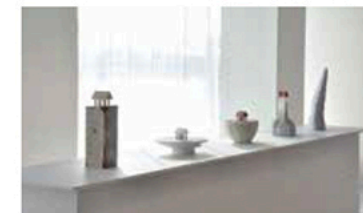
静岡市美術館
SHIZUOKA CITY
MUSEUM of ART



Shizuoka City Museum of Art opened its doors in May 2010, and is located on the third floor of the Aoi Tower building, at the north exit of JR Shizuoka Station. The museum's guiding principle is "To create and communicate an energetic art and culture of the people and the local region". While maintaining a focus on organizing exhibitions and communication programs, we aim to be an art museum that may serve as a "meeting place in the heart of town".

Communication Programs

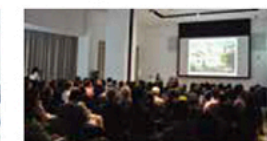
The entrance hall, where the Museum Shop and Café are located, the multi-purpose room and the workshop room are collectively called the "Communication Zone". Various outreach programs are held here, including presentations and lectures on diverse art scenes, symposiums, concerts, screenings of art films, and workshops. Also, "Museum Classes" – art appreciation sessions for school groups – are coordinated for each exhibition. Please inquire for more information.



Megururi Art Shizuoka 2018: Iso Sugiyama

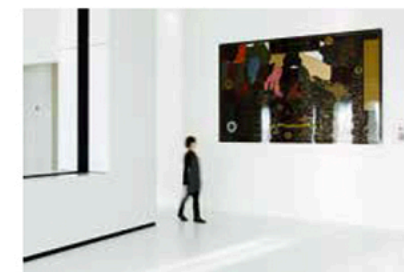


Workshop room: Open atelier



Multi-purpose room

A View of the Fifty-Three Stations of the Tokaido



In January 2012, a lacquer work representing a bird's-eye view of the entire Tokaido Road was unveiled in the entrance hall. A large piece, measuring two-by-three meters, it transmits the craft traditions of Shizuoka into the present.

Yuki Ogura and the Painters of the Japan Art Institute

Collection from the Museum of Modern Art, Shiga
April 6 (Sat.)-May 26 (Sun.), 2019



Japan Art Institute, founded in 1898 by Tenshin Okakura, was filled with painters with fervent personalities such as Taikan Yokoyama, Yukihiro Yasuda, and Shikō Imamura, all working to create new styles of Japanese painting. Yuki Ogura (1895-2000), from Ōtsu city in Shiga Prefecture, studied under Yukihiro Yasuda, and devoted herself to painting with her senior institute members from age 25 until she passed away at the age of 105. Her works followed tradition with new sensibility and are still very popular today.

This exhibition displays masterpiece works from The Museum of Modern Art, Shiga, and looks back on the essence of Yuki Ogura's art, and the talents of Japan Art Institute that nurtured it.

(Left)
Taikan Yokoyama, *The Scenes of Rain in and around Kyoto: Early Summer Rain at Yawata, 1919*
All works from The Museum of Modern Art, Shiga

(Right)
Yuki Ogura, *Sisters, 1970*



Ukiyo-e Prints from the Mary Ainsworth Collection, Allen Memorial Museum, Oberlin College

June 8 (Sat.)-July 28 (Sun.), 2019

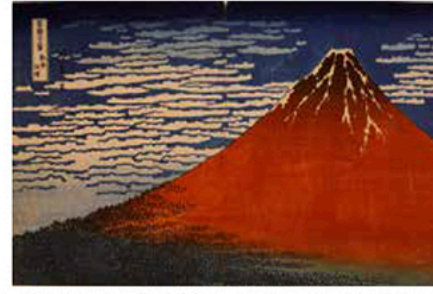
Allen Memorial Museum of Oberlin College, Ohio, has more than 1500 Ukiyo-e Prints a collection formed by Mary Ainsworth over 25 years, from 1906, when she first visited Japan. Many are rare early Ukiyo-e and some are the only examples in the world. Works by Utagawa Hiroshige, that form the majority of the collection, and works by the world-renowned Katsushika Hokusai are excellent both in quality and quantity.

This exhibition displays the first homecoming for the 200 top gems of the collection.

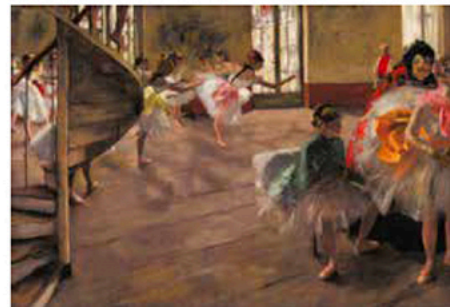
Utagawa Hiroshige, *Suidobashi Bridge and Surugadai, from the series One Hundred Famous Views of Edo, 1857*
All works from the Mary Ainsworth Collection, Allen Memorial Art Museum, Oberlin College



2



Katsushika Hokusai, *Fuji in Clear Weather (Red Fuji)*, from the series *Thirty-six Views of Mt. Fuji*, c.1831



For this exhibition, 73 excellent works of British, French, and Dutch painters such as Edgar Degas' masterpiece, *The Rehearsal*, which previously could be seen only in Glasgow, will be coming to Japan for the first time. Together with seven works of Renoir, Cézanne, and van Gogh etc. from Kelvingrove Art Gallery and Museum in Glasgow (including three that will be shown in Japan for the first time), the exhibition looks back on the transition from Realism to Impressionism.

(Left)
Edgar Degas, *The Rehearsal*, c. 1874
All works from Glasgow, The Burrell Collection ©CSG CIC Glasgow Museums Collection

(Right)
Eugène Boudin, *Deauville, the Dock*, 1891

Barcelona: The City of Artistic Miracles

The Essence of Catalan Modern Art, from the Modernisme to the Avant-garde
November 15 (Fri.), 2019-January 19 (Sun.), 2020

Prospering as the key node of Mediterranean trade, a unique culture in Barcelona in the midst of economic developments from the mid-19th century.

Artists such as Antoni Gaudí created the buildings with distinctive "modernisme" style. Young Pablo Picasso, Joan Miro, and Salvador Dali continued to search for a new expressive style.

This exhibition will feature some 130 paintings, pieces of furniture and jewelry created over some eighty years from the second half of 19th century to the Spanish Civil War. It comes with the support of the Catalonia Autonomous Community and Museu Nacional d'Art de Catalunya.



Antoni Gaudí, *Two-seat Sofa from Casa Batlló*, c.1904-06, Museu Nacional d'Art de Catalunya



Ramon Casas, *Sombres*, 1897, Marc Martí Colección

The Magic of Alice in Wonderland Exhibition

February 1 (Sat.)-March 29 (Sun.), 2020



Lewis Carroll's "Alice's Adventures in Wonderland" is still loved all over the world after more than 150 years of its publication in 1865. This story that was born from his exchange with a girl named Alice Liddell has influenced artists beyond the boundaries of literature. This is one of the largest Alice-related exhibitions in Japan; it presents Alice's world and displays about 200 works, including ones introduced to Japan for the first time.

The exhibition displays the original sketches of popular 19th century illustrator John Tenniel, whose drawings determined the image of Alice, and many kinds of illustrations, videos, and contemporary art of Alice by a myriad of artists.



(Above)
John Tenniel, *Queen Alice*, 1870-71, The Rosenbach, Philadelphia

(Below)
Arthur Rackham, *Mock Turtle*, 1907, Private collection ©The Korshak Collection

